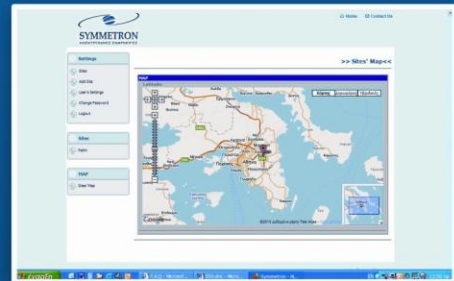
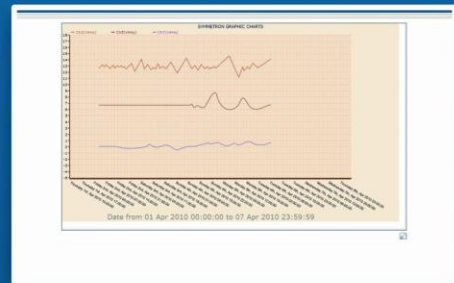


Captum

Web real-time data logger monitoring



Captum makes it easy to set up a real-time web page presenting data logger measurements, which have been sent to a web database. Both measurement data and statistics are available.

Captum may be configured to allow either private or public access to measured data.

This is a service created and supported by Symmetron. It is free to Stylitis data logger users.

DATA LOGGER COMPATIBILITY

- Stylitis-10 (all versions).
- Stylitis-Power.
- Stylitis-50.

INTEGRATED SYSTEM

Part of a complete system, Captum collaborates with:

- **Diameson**, Symmetron's GPRS gateway server. The data logger or Sym-o-net acts as a client to Diameson. Data will be sent to Captum's database via a GPRS modem (built-in or external Sym-o-net) or via Stylitis-10's built-in Ethernet module.

For detailed specs please refer to individual product data sheets.

Developer information

Data from the Captum database are available to users developing their own applications via a simple to use API.

The API specifies Logger S/N, data Start and End dates and returns results in the form of an XML file.

Contact Symmetron for details.

FEATURES

- Data are sent to the database every interval
- Users may view latest acquired data.
- Users may generate a *plot* between a range of dates. The plot is updated in real-time.
- Especially for Stylitis-10, *control output alarm* and *PV alarm* records are also sent to the database, while an email alarm is sent to the site's user (to their subscription email address).
- Users may also view all the *alarms* generated between a range of dates, in table form.
- Finally, users may view *data statistics* in bar graph form, per hour, per day of the month, per day of the week and per month.
- Site information includes description, Serial Number and Password, photo, and longitude and latitude. Geographical location may be selected on map.
- Sites may be selected by name or clicking on a map.
- Captum also supports applications where data logger data are destined to be freely available to open public. Public sites are only available for viewing.
- Compatible with standard Internet browsers (IE, Firefox, Chrome, etc.)

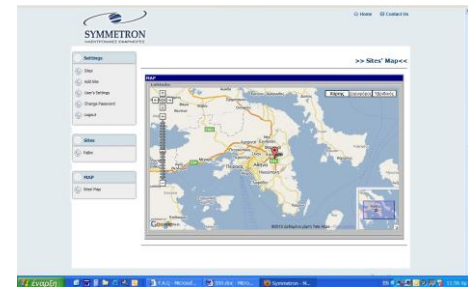
CONFIGURATION

Captum is configured in 2 steps:

- The first step requires that users register their data loggers by Serial number and Password (required) in Captum. Users may personalize site appearance by adding photos and descriptions. They can even add their own logo.
- The second step is configuring the data logger for the connection method between the logger and their computer. This may be either via a GPRS modem (built-in or external Sym-o-net) or via Stylitis-10's built-in Ethernet module, as a client.

Then, data logger measurements (plot, statistics and alarms table) are available, via a web browser, anywhere in the world.

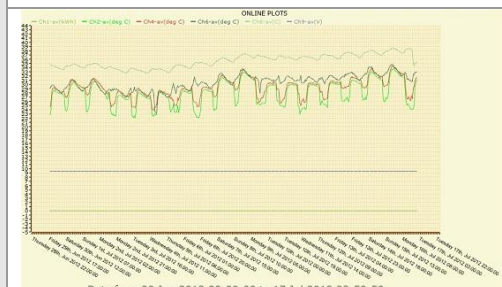
Symmetron® is a registered trademark. Stylitis, Opton, Captum, Diameson, VeriVane and Emmetron, are trademarks of the Symmetron Company. All other trademarks belong to their respective owners.



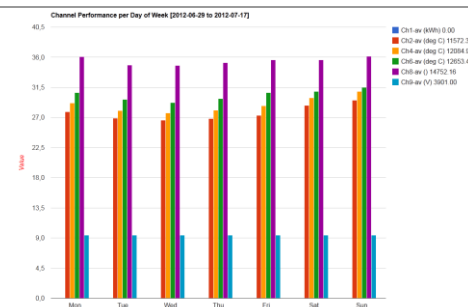
Map



Site view



Real-Time Plot



Statistics per weekday



Tel: +30-2106034002

Fax: +30-2106034003

http://www.symmetron.gr